

# PROFILE OF

# MARMA COMPOSITE LTD.



100% EXPORT ORIENTED GARMENTS FACTORY



Printing Building



Administrative Building



Utility Building



Security Building





## MESSAGE FROM MANAGING DIRECTOR

MARMA composite limited believes in product quality, kaizen and dynamism and being cost-effective in achieving total consumer satisfaction. Our strengths are flexibility, diversity and innovation. We are committed in dressing peoples worldwide with distinctive, qualitative and fashionable knitwear. And committed also about concerning workers rights and benefits.

As regards, The compliance performance of this organization monitored with concern. Baby and childcare centres are arranged within the premises of the company. For sustainable organization training is our strength like first aid, health and safety, emergency evacuation and performance improvement etc. Are arranged as a regular practice.

A large number of well experienced, motivated and skilled production experts, industrial engineers, quality assurance managers, technicians and specialists have been employed from the top companies for ensuring a broad base of key skills and top class operation.

I express my cordial gratitude and appreciation to all our customers and suppliers for their continuous support and co-operation.



**ENGR. MOHAMMAD MUSTAFA - E - ZAMAN**  
**MANAGING DIRECTOR**

# About Us

**MARMA Composite Ltd.** is a 100% Modern Composite export-oriented garments manufacturing industry in Bangladesh.

Year of Established	: 2010
Total Land	: 3.4086 acres.
Total No of Building	: 5 Buildings (2 Manufacturing, 1 Utility, 1 Admin & 1 Security)
Operation Space	: 2,00,000 sqft.
No of Employee	: 2150
Turnover	: U\$D-60.00 M
Registered	: BKMEA, BTMA



# Our Management



**Engr. Mohammad Mustafa-E-Zaman**  
Managing Director



**Azad-Bin-Ashraf-Khan**  
Director



**Afsana Khanam**  
Director



**Farzana Ahmed Roni**  
Director



**Mohammad Mohosin Iar (Titu)**  
Executive Director



**Md. Mustafa-E-Kader**  
GM



# MISSION AND VISION

## MISSION:

To deliver high-quality products and exceptional services to our customers by harmoniously blending safety, quality and efficiency.

- Be a market leader in the field of value global supplier of RMG.
- Innovative development and sustainable growth.
- Deliver quality fashionable products at affordable prices.
- Be innovative, cost-effective and globally competitive.
- Outstrip our customer's expectations.
- Provide Sustainable opportunities for employees.

## VISION:

- To set up a fully compliant & longer term, a “Semi Green” factory and be a dependable strategic partner to our customers.
- To become the benchmark manufacturing company.

# OUR ACHIEVEMENT



Oeko-Tex Standard-100  
Ref.: 12.HBD.06546



Accord Certified



BCI



STeP Certified



Sedex Certified



OCS



GOTS



RCS



GRS



WRAP  
Status: Gold



BSCI



## ETP:

Occupancy certificate of ETP is gotten from Department of Environment. But ETP is not yet ready.

# Operating Bank

## 01. Southeast Bank Limited

New Eskaton Branch Chowdhury Center, 23/Ka, Rashed Khan Menon Sarak, (Old New Eskaton Road), 1st Floor, Ramna, Dhaka-1000, Bangladesh  
CD A/C # 11100006744, SWIFT: SEBDBDDHESK

## 02. Mercantile Bank Limited

House # 10/A, Road No # 7/D, Sector # 9, Uttara Model Town, Dhaka-1231.  
A/C No. 111611121670915, SWIFT: MBLBBDDH017





# Fabric:

Single Jersey Fabric;

Lycra Single Jersey Fabric;

Single Lacoste Fabric;

Lycra Single Lacoste

Fabric;

Pique Fabric;

Double Lacoste Fabric;

Terry Fabric;

Lycra Terry Fabric;

Fleece Fabric;

Lycra Fleece Fabric.

1X1 Rib Fabric;

2X2 Rib Fabric;

2X2 Lycra Rib Fabric;

Interlock Fabric;

Lycra Pique Fabric;

Birds Eye Fabric;

Flat Knit Collar-Cuff



# Garments:

## MEN'S:

T-Shirt;  
Polo Shirt;  
Tank Top;  
Zip Thru Hoody;  
Jacket;  
Granddad Tee;  
Vest, Shorts;  
Pyjama;

## WOMEN'S:

T-Shirt;  
Polo Shirt;  
Tank Top;  
Ladies Zip Thru Hoody;  
Ladies Jacket;  
Night Dresses;  
Leggings;  
Ladies Pyjama;  
Skirt

## KID'S

T-Shirt;  
Polo Shirt;  
Sweat Shirt;  
Pants;  
Pyjama Set;  
Fashion Shirt.







# Production:

## Monthly Production Capacity of 40 Lines

- Basic items : 20,80,000 pcs.
- Fancy items : 17,26,400 pcs.
- Critical items : 14,21,334 pcs.

## ➤ Future Plan: 10 Lines (Extend)

## Total Capacity will be (50 Lines):

1. Monthly -17,00,000 Pcs( Average SMV-9.0- Above 11.0)
2. Monthly -21,75,0000 Pcs( Average SMV-7.0-9.0)
3. Monthly -26,00,000 Pcs( Average SMV-4.0-7.0)





## Factory Efficiency

- Cutting : 70%.
- Sewing : 65%.
- Finishing : 65%.
- Overall Efficiency : 67%.



# QUALITY ASSURANCE SYSTEM

We have Dedicated 170 Members for Quality Assurance Team.

- Maintain The Quality SOP
- Perform from Development to Packing.
- Follow AQL 2.5
- Maintain Traffic Light System.



## FACILITIES:

- Shrinkage Test Facility.
- Twisting Test Facility.
- Modern Lab will be Set-up Immediately.





# MACHINERIES & EQUIPMENT

Section	Total Machine	Brand/Country
Utility	10	German & Italy
Knitting	27 (12/15)	China/Jiunn Long
Cutting	20	KM
Sewing	902	Juki & Pegasus
Finishing	70	Veit & Oshima
<b>Grand Total</b>	<b>1029</b>	

# OUR CLIENTS

## Our existing Buyers:

- LIDL (Distra) - Germany
- ALDI - Germany
- Living Stone - UK
- MATALAN - UK
- TAKKO - Germany
- Champion, Lotto, - Netherlands
- Henbury, cofra - UK
- Public - Serbia
- GIKAS - Sweden
- ASCOLOR - New Zealand
- M & Co - UK
- Choricó - Japan



# COMPLIANCE & SAFETY

## ➤ Lifestyle Centre:

1. A Medical Centre, A Day Care Centre for Children, Indoor Games.
2. Training Centre, Dining Room and Spacious Prayer Hall.

## ➤ Medical Facilities:

1. A 5 (Five) bed medical centre.
2. One Doctor and Nurse.

## ➤ Modern Fire Fighting & Worker Safety:

1. High-Quality Fire Protection and Detection System.
2. Modern Water Sprinkler System.
3. Sufficient Smoke and Heat Detector, Modern BBT System.





# Electrical Machinery





# Photo Gallery





# Photo Gallery





# PC Election-2024





# CULTURE PRACTICE

- Arranging Indoor & Outdoor Games.
- Quarterly & Yearly National Tour.
- Incentive Rewards Program.





# SOCIAL ACTIVITIES





# ENVIRONMENT

## ➤ Sustainable Site:

1. Location of MARMA Composite Ltd. It's half an Hour distance from Dhaka Airport.
2. Facilities and amenities are located within 500 meters
3. Secure bicycle parking facilities and encourages the use of non-fossil fuel transport.

## ➤ Certified Woods and Paints:

1. FSC (Forest Stewardship Council) certified wood and low VOC (Volatile Organic Compound) paints have been used to minimize the impact on the environment.

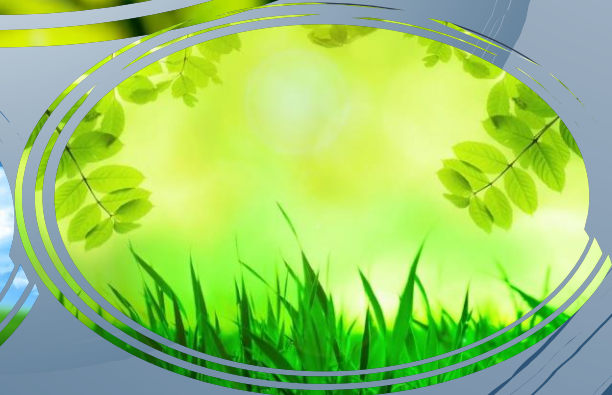
## ➤ Use Local Materials for Construction:

1. 100% of local materials has been used for construction to support the local economy and to reduce the environmental impact resulting from transportation.


## Think Green

- Improve the level of environmental management.
- Prioritize environmental preservation
- Promote 3R (reduce, reuse and recycling).
- Improve employees' environmental awareness.
- Share the environmental information with society.

MARMA Composite Ltd.



# CONTACT US

Mohammad Mohosin Iar (Titu)   
Executive Director

+88 01777707104 

titu@marmaclbd.com 

www.marmaclbd.com 

Md. Mizanur Rahman (Shipon)   
Manager (Compliance)

+88 01777707145 

shipon@marmaclbd.com 

www.marmaclbd.com 

**Factory** : Tongabari, Ashulia, Savar, Dhaka, Bangladesh.

**Head Office Address** : House No# 2, Road No# 4, Sector# 11,  
Uttara-1230, Dhaka, Bangladesh.

Website: [www.marmaclbd.com](http://www.marmaclbd.com)



THANK YOU !!!